

# LWAX SERIES Outdoor Lighting

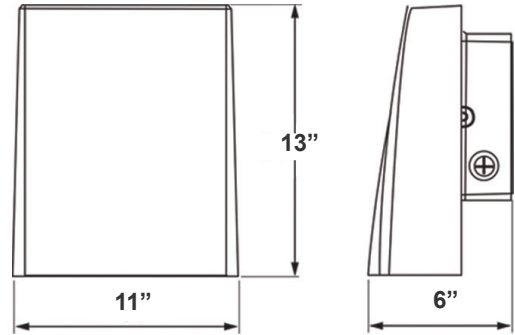
LWAX-LG-50-120W-MCTP-P-WH  
GEN. 2 ADJUSTABLE WALL PACK, WATTAGE & CCT SELECT. WITH PHOTOCELL

**MCTP** Multi Color Temperature & Multi Power/Wattage (Selectable)

Customer Name: \_\_\_\_\_

Project Name: \_\_\_\_\_

Note: \_\_\_\_\_ Type: \_\_\_\_\_



**11" (W) x 13" (H) x 6" (D)**

Ideal for general site lighting, alleys, loading docks, doorway, pathway, and parking areas. Great for use with motion sensors or another instant on/off controls.

## Features

- High Light Transmittance, Anti-UV and Fire Resistant PC Lens
- Four 1/2" Knockouts: 1 Top, 1 on Each Side, 1 Back
- Die-Cast Aluminum With Powder Coat Finish (Dark Bronze)
- 7-Year Warranty
- Multi CCT and Power (Switches are inside fixture)

## Technical Specifications

### Electrical:

- Voltage: 120-277VAC 60Hz
- Wattage: 50W/80W/120W
- Power Factor: >0.95
- Efficacy: 125 LPW

### Mechanical:

- Die-Cast Aluminum With Powder Coat Finish
- DC Button Photocell Included
- High Light Transmittance, Anti-UV and Fire Resistant Shatterproof PC Lens
- Light Head Can Be Adjusted From 0° to 90°
- Can Be Installed Facing Up (As An Uplight)
- Full Cutoff, Dark Sky Compliant
- Four 1/2" Knockouts: 1 Top, 1 on Each Side, 1 Back
- Operating Temperature: -4°F -104°F
- IP65, Suitable for Wet Location
- 7-Year Warranty

### Lighting:

- Dimming: 0~10V Dimmable
- Multi CCT and Power (Switches are inside fixture)
- The Type II Distribution is Used For Wide Walkways, On Ramps and Entrance Roadways, As Well As Other Long, Narrow Lighting
- Total Lumens: 15000LM Max
- Color Temperatures: 3000K/4000K/5000K/5700K
- Color Rendering Index: CRI ≥ 80
- Beam angle: 80° x 100°
- Rated life: 70,000 Hrs

### Applications:

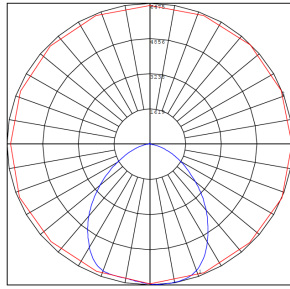
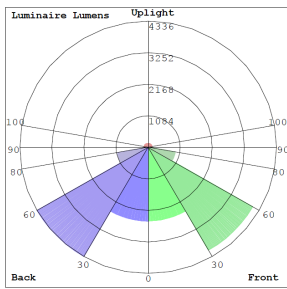
- General site Lighting
- Alleys
- Loading docks
- Doorways
- Pathways
- Parking areas

### Other Models:

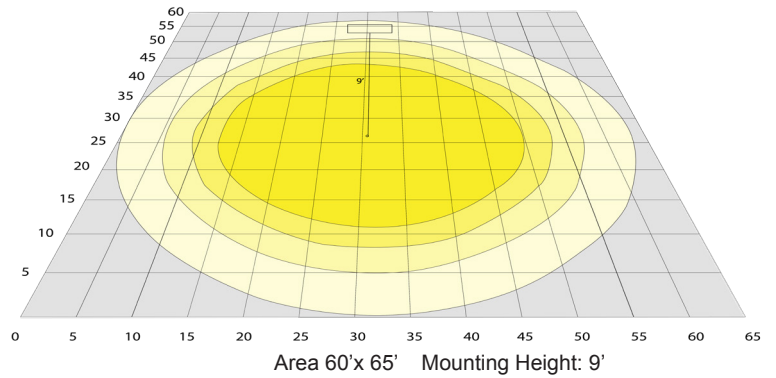
- 50W | 6150LM | LWAX-MD-20-50W-MCTP-P



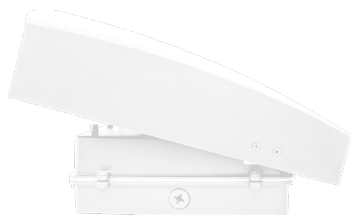
## Photometrics: LWA-LG-50-120W-MCTP-P-WH



BUD Rating: B4-U3-G3



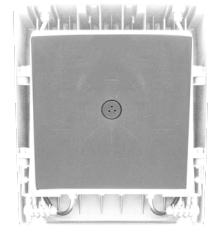
## Other Views:



Side View



Front View



Back View

## Performance Table: LWA-LG-50-120W-MCTP-P-WH

| MODEL NO.                 | Wattage | Voltage  | Lumens  | Color Temp.                      | BUG Rating | LPW |
|---------------------------|---------|----------|---------|----------------------------------|------------|-----|
| LWAX-LG-50-120W-MCTP-P-WH | 50W     | 120~277V | 6250LM  | 3000K<br>4000K<br>5000K<br>5700K | B4-U3-G3   | 125 |
|                           | 80W     |          | 10000LM |                                  |            |     |
|                           | 120W    |          | 15000LM |                                  |            |     |

## Sample Ordering

| Model | Size | Min. | Max. | Wattage | Color Temp. | Photocell | Finish |
|-------|------|------|------|---------|-------------|-----------|--------|
| LWAX  | LG   | 50   | 120W | MCTP    | P           | WH        |        |

## Accessories:

Blank = No Option For Accessories  
LWA-SH3=SHROUD

## Factory-Installed Options:

Blank = No Option For Accessories  
OPT-EM-OD2INT = INTERNAL EMERGENCY BACKUP BATTERY  
OPT-SEN-3MRLV-5 = PROGRAMMABLE MICROWAVE BI-LEVEL  
OPT-CLR-85 = COLOR PAINT  
OPT-PC-B = BUTTON  
OPT-TRS-T120 = TAMPER RESISTANT SCREW  
WEC-8RC = OPTIONAL REMOTE

## ACCESSORIES:



LWA-SH3

## FACTORY-INSTALLED OPTIONS:



OPT-EM-OD2INT



OPT-SEN-3MRLV-5



WEC-8RC



OPT-PC-B



**COLOR CHART:** \* Choose from one of our Premium Colors with no set-up fee.

**Gloss:**



SILVER METALLIC  
70 GLOSS  
T357-GR105



SILVER METALLIC  
30 GLOSS  
T353-GR06



DARK RED 90  
GLOSS  
P009-RD02



INTERNATIONAL  
ORANGE 90  
GLOSS  
T009-OG26



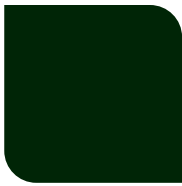
SAFETY ORANGE  
90 GLOSS  
T009-OG01



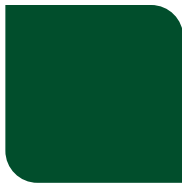
YELLOW 90  
GLOSS  
T009-YL14



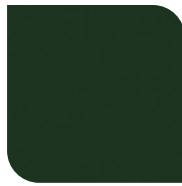
YELLOW 90  
GLOSS  
T009-YL01



TRAFFIC GREEN  
70 GLOSS  
T007-GN16



GREEN 70 GLOSS  
T007-GN13



GREEN 60 GLOSS  
C006-GN03



BLUE 90 GLOSS  
T009-BL01



DARK BLUE 80  
GLOSS  
T008-BL20



RAL 8028 TERRA  
BROWN 90 GLOSS  
C209-BR358

**Hammer:**



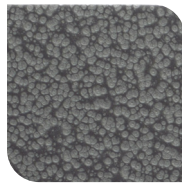
WHITE HAMMER  
T013-WH09



BEIGE HAMMER  
T013-BG38



GREY HAMMER  
C013-GR08



SILVER  
HAMMERTONE  
T064-GR05



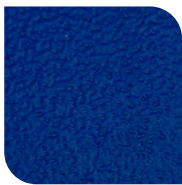
BLACK HAMMER  
T013-BK62



RED HAMMER  
T013-RD15



GREEN HAMMER  
T013-GN220



BLUE HAMMER  
T013-BL468



BRONZE HAMMER  
T012-BR161

**Texture:**



WHITE TEXTURE  
C031-WH120



FLINT GRAY  
TEXTURE  
T243-GR522



BLACK TEXTURE  
C241-BK109



RED TEXTURE  
T241-RD129



BLUE TEXTURE  
C241-BL544



OIL RUBBED  
BRONZE TEXTURE  
T291-BR251

**Vein:**



BLACK/WHITE  
VEIN  
T075-WH34



SILVER VEIN  
T375-BK26



COPPER VEIN  
EXTERIOR  
T075-BK211



GOLD VEIN  
T375-BK10



COPPER VEIN  
T375-BK07

